



Profile of Asians in the District of Columbia using 3-year and 1-year American Community Survey estimates and other data

Using data to make informed decisions is key to better serving the Asian population in the District of Columbia

An ever transforming population: A Glimpse into Asians in the District of Columbia

Neel Saxena

Introduction

This profile reflects data from the 2005 – 2007 3-year American Community Survey (ACS) estimates, 1-year ACS estimates and other government data resources.¹ The 3-year ACS data is a valuable research tool that provides characteristic estimate data on populations at a 20,000 threshold, whereas 1 year estimates have a threshold of 65,000. These estimates are intended for research purposes and the Census warns against drawing conclusions or taking actions based on this data; the intent of this profile is informational to create a demographic profile of Asian in the District.

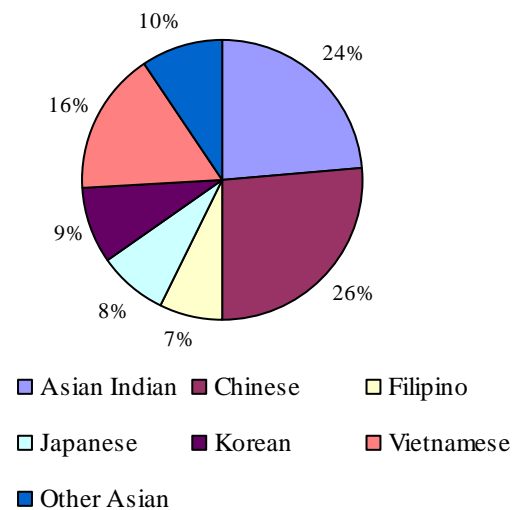
Using these estimates this profile will illustrate changes in the Asian population² in the District of Columbia and highlight various characteristics of this population, such as: population, income and poverty, education, immigration, English ability,

employment and housing. Additional data will be available when the 5-year ACS estimates are released.

Population

Since the 2000³ Decennial Census, the Asian population in the District of Columbia has seen an increase of

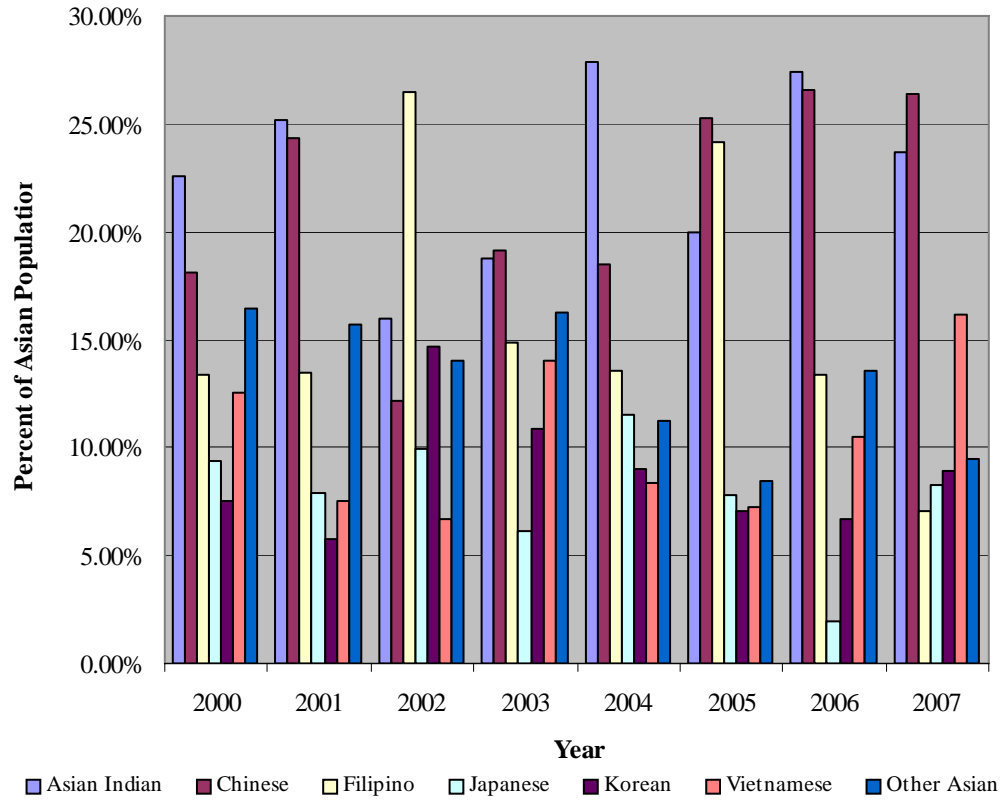
FIGURE 1. Asian Ethnic Group Breakdown



Sources: 2007 American Community Survey 1-year estimates



FIGURE 2. Asian Ethnic Group Population Trend 2000 - 2007



Sources: 2007 American Community Survey 1-year estimates.

nearly 25%⁴ in 2007, which represented 3.73% of the District’s population. Comprised mainly of foreign-born individuals, the District Asian population in 2007 comprised many diverse Asian ethnic groups. In comparison to the total D.C. population, Asians in D.C. had slightly higher incomes, experienced lower rates of poverty, had higher levels of education and faced a lower rate of English-language proficiency.

While the entire Asian population grew over seven years, the various ethnic groups fluctuated over time. Within the Asian population, 44.3% were females and 55.7% were males. The majority of Asians were between the ages of 25 and 34 years, youth (17 years and under) constituted 15.4% and senior citizens (65 years and older) 6.9%. The District’s largest Asian

groups were Chinese at 4,767 and Indian at 4,277 followed by Vietnamese (2,926), Other Asian (1,718), Korean (1,615), Japanese (1,487), and Filipino (1,276).⁵

Income and Poverty

The Asian population earned more than the District’s total population in 2007. With an average household size⁶ of 2.01, the District’s Asian population had a median household income⁷ of \$66,880, 30% higher than the District’s median household income, \$52,187. The median income for Asian families was \$82,960, which was also higher than the median family income⁸ for the District, \$60, 970. The average family size⁹ for Asian families was 3.01. Per capita income for Asians was at \$39,667, close to the DC per capita income of \$38,009.

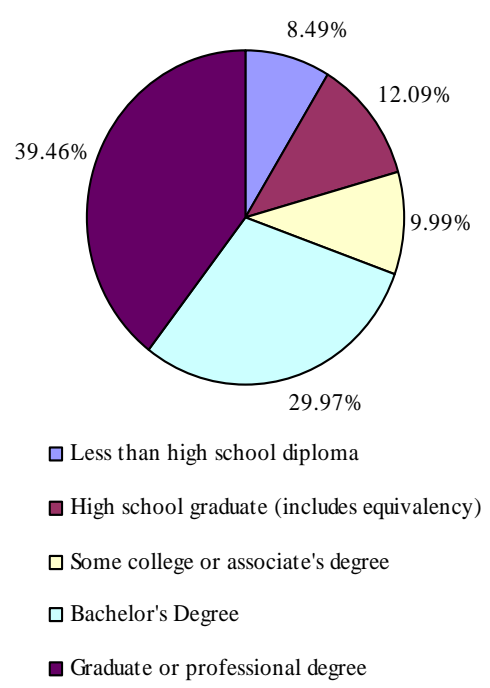
In comparison to the total D.C. population, Asians in D.C. had slightly higher incomes, experienced lower rates of poverty, had higher levels of education and faced a lower rate of English-language proficiency.



DC's Asian population experienced lower rates of poverty for families and individuals than the rest of the District. The percentage of Asian families below poverty¹⁰ was 9.4%, compared to the District's 15.7%. For Asian families with related children under 18 years old, approximately 12.8% fell below the poverty line. In families with a female householder without a husband present, 10.2% lived in poverty, whereas for those households with related children under 18, 32.2% lived in poverty.

Among Asian individuals for whom poverty status was determined, 11.1% lived below the poverty line, lower than the District's percentage. Out of the Asian youth population (under 18 years), 5.4% of these individuals lived in poverty. A fourth of Asian individuals 65 years and over (27.7%) fell below the poverty line, which was greater than the District rate of 15.6%.

FIGURE 3. Educational Attainment



Source: 2007 American Community Survey 3-year estimates

Education

In the Asian population 25 years and older, approximately 12.5% graduated high school or equivalent, compared to 21.4% of the entire District's population 25 years and older. In this same population, 30 % of Asians had a Bachelors degree, compared to 20.4% of the entire District's population.

Immigration and English Proficiency

The District's Asian population was largely made up of foreign-born individuals, who accounted for 54.78% of the total Asian population. This was approximately four times more than the District's foreign-born population of 12.68%. Additional immigration and citizenship data is available through the Department of Homeland Securities division on Immigration Statistics. According to the latest data, the District had 2,541 individuals obtain Legal Permanent Status¹¹ in 2007 with 210 from China, India and the Philippines. There were 1,334 individuals naturalized¹² in 2007 in the District of Columbia, with 146 from China, Indian, Philippines, and Vietnam.

Half (55.1%) of the District's Asian population spoke a language other than English, compared to 15.1% of the entire District population. For the purposes of this profile, Limited English Proficient (LEP) individual is defined as a person who speaks *English less than very well*. There were 3,820 (19.0%) D.C. Asians, who spoke *English less than very well*, which is almost a four times greater than the District's percentage (5.3%).

Employment and Housing:

The percentage of District Asians in the labor force in 2007 was 69.7% compared to 62.8% of the entire District's population in the labor force. Most Asians in the labor force had an occupation in management, professional, and related occupations.

Among Asian households, renting was more common, 60.9%, rented their housing. For District households, the rate of renters was 55.9%. The median value of rented housing among Asian households was \$1152, while the median value for the District was \$906. The home ownership rate for Asian households was 39.1%, lower than the District's 44.1%.

Footnotes

¹ All data will be used from the 2005 – 2007 ACS estimates unless otherwise specified and be labeled as 2007 data points in the profile.
² The data used is from the category of "Asian Alone or in Any Combination," which included persons who marked Asian and persons who marked Asian and at least one other race. The U.S. Census defined *Asian* as self-identification among people of Asian descent.
³ The ACS 2005-2007 3-year estimates are the first set of ACS estimates produced for geographic areas with populations between 20,000 and 64,999. Census supports comparisons made between the 2005-2007 ACS data and Census 2000 data but caution users that there are important differences between the two data sets. These include differences in residence rules and universes. Perhaps of greatest importance, the Census 2000 characteristics are interpreted to be a snapshot of April 1, 2000 while the 2005-2007 ACS estimates describe the average characteristics over the 36 month period of January 2005 through December 2007.
⁴ The data used is from the category of "Asian Alone or in Any Combination," which included persons who marked Asian and persons who marked Asian and at least one other race. The U.S. Census defined *Asian* as self-identification among people of Asian descent.



⁵Data from 2007 American Community Survey 1-year estimate

⁶Household size is the total number of people living in a housing unit.

⁷Household income refers to the total income of all occupants in a housing unit.

⁸Family size is the number of people who are related by birth, marriage, or adoption and reside together in a housing unit.

⁹Family income refers to the total income of a group of two or more people related by birth, marriage, or adoption and reside together.

¹⁰For the 2000 Census, a family or individual was classified as "below the poverty level" when the total family income or unrelated individual income fell below the poverty threshold specified for the applicable family size, age of householder, and number of related children younger than 18 present in 1999. For these thresholds, please see <http://www.census.gov/hhes/poverty/threshld/thresh99.html>.

¹¹Legal permanent residents (LPRs) are foreign nationals who have been granted the right to reside permanently in the United States. LPRs are often referred to simply as "immigrants," but they are also known as "permanent resident aliens" and "green card holders."

¹²Naturalized citizens are foreign nationals who have become citizens of the United States after fulfilling requirements established by Congress in the Immigration and Nationality Act.

Notes about the Data

The American Community Survey (ACS) is a new approach to producing critical information about the characteristics of local communities. It will eliminate the need for a long form in the 2010 Census and is a key part of the Census Bureau's Decennial Census Program. The ACS publishes social, housing, and economic characteristics for demographic groups covering a broad spectrum of geographic areas in the United States and Puerto Rico. The ACS shifted from a demonstration program with a different sample design and sample size to the full sample size and design in 2005. It became the largest household survey in the United States, with an annual

sample size of about 3 million addresses. Every year the ACS can support the release of single-year estimates for geographic areas with populations of 65,000 or more. The ACS will accumulate sample over 3-year and 5-year intervals to produce estimates for smaller geographic areas including census tracts and block groups. For more information about the ACS, you can refer to the *ACS Design and Methodology* report at www.census.gov/acs/www/Downloads/tp67.pdf

The Census data provides information not only on single-race responses but on multi-race responses as well. "Asian alone" corresponds to those respondents who reported exactly one Asian group and no other Asian group or race category. "Alone" should be considered the minimum population size in any analysis that uses Census data. "Asian Alone or in Any Combination" corresponds to the responses (not respondents) that include the selected Asian group, either alone or in any combination with other Asian groups or other race categories. If a respondent selected more than one Asian group (i.e. "Filipino" and "Korean"), that individual would be included in the total for each Asian group. If a respondent selected an Asian group and another racial group (i.e. Japanese and White), that individual would not be included in "Asian Alone" but would be counted in "Asian Alone or in Any Combination." As a result, some overlap in the "In Combination" numbers will occur. Furthermore, "Alone or in Any Combination" should be considered the maximum population size in any analysis that uses Census data. In order to be as inclusive as possible, this profile uses the data from the race category of *Asian Alone or in Any Combination*.

For More Information

For further information about this profile, please contact Neel Saxena, Program Coordinator at the D.C. Mayor's Office on Asian and Pacific Islander Affairs at:

D.C. Mayor's Office on Asian and Pacific Islander Affairs (OAPIA)
 441 4th Street, NW, Suite 721N
 Washington, DC 20001
 Phone: (202) 727-3120 Fax: (202) 727-9655
www.apia.dc.gov



Government of the District of Columbia
 Adrian M. Fenty, Mayor



Mayor's Office on Asian and Pacific Islander Affairs
 Soohyun Julie Koo, Director

